

Hydraulic Crawler Crane

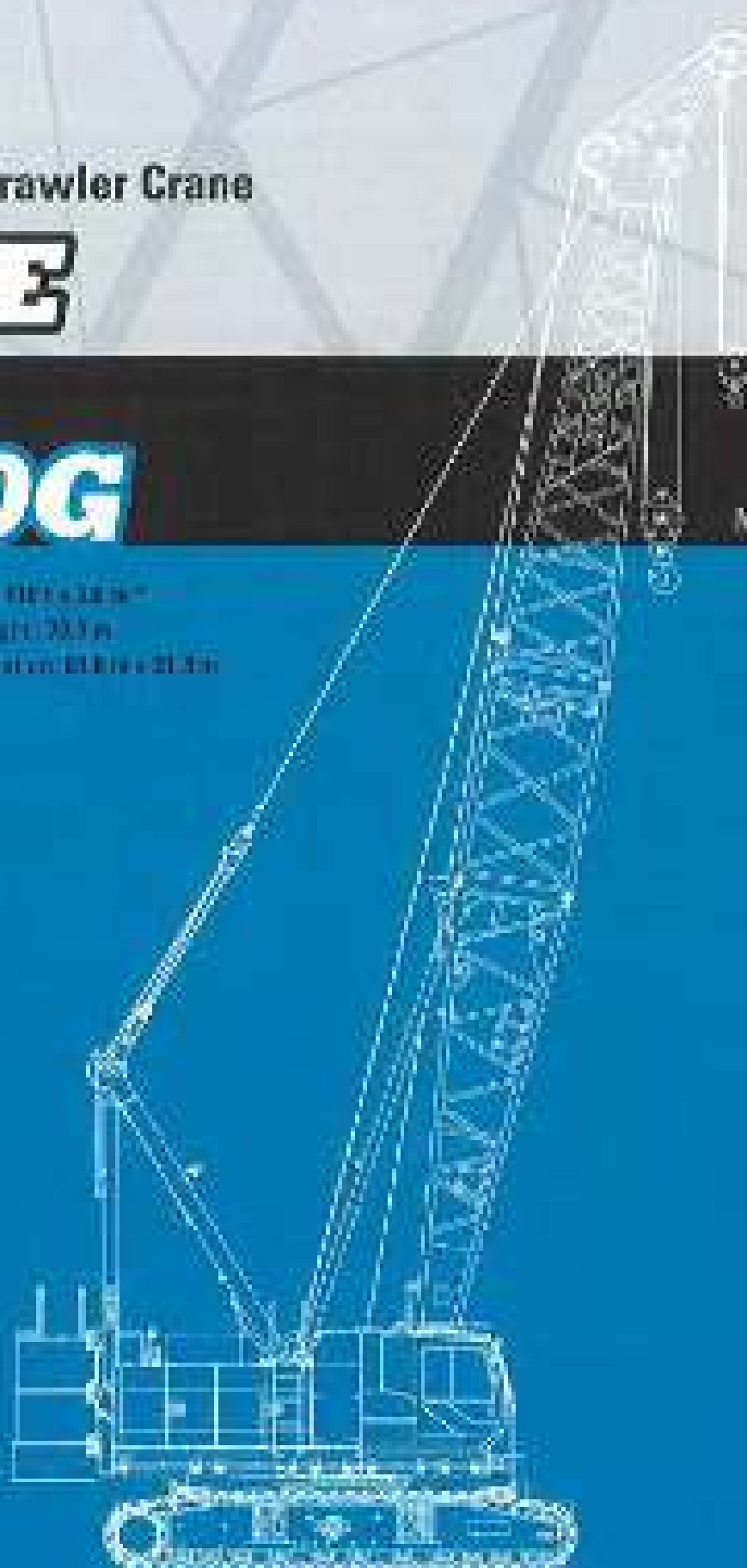
CKE

1100G

Model: CKE1100G

- Max. Lift Capacity: 100 t x 28.9 m
- Max. Outreach: 103 m
- Max. Height: 200 m (with 21.5 m)

• www.kobelco.com



KOBELCO



CKE1100G CONTENTS

3	SPECIFICATIONS
5	GENERAL DIMENSIONS
6	BOOM AND JIB ARRANGEMENTS
7	WORKING RANGES
10	SUPPLEMENTAL DATA
11	LIFTING CAPACITIES
16	SUPPLEMENTAL DATA FOR CLAMSHELL
17	LIFTING CAPACITIES
18	SUPPLEMENTAL DATA FOR REDUCED WEIGHTS
19	LIFTING CAPACITIES
20	TRANSPORTATION PLAN
21	PARTS AND ATTACHMENTS



SPECIFICATIONS



Power Plant

Model: H80L060-4V

Type: 4-cyle, water-cooled, vertical in-line 3-cylinder injection, turbo-charger, air-cooled

Complies with: NFPA (Europe), Stage II B and US EPA Inherently 4

Displacement: 2,664 cc

Rated power: 210 kW @ 2,100 rpm

Max. Torque: 1,017 Nm @ 1,800 rpm

Cooling System: Water-cooled

Starter: 24V-5kW

Filtration: Conjugated type, cone, thermally controlled

Air cleaner: Dry type with replaceable paper element

Throttle: Twist grip type hand throttle, electrically activated

Fuel filter: Replaceable paper element

Ballast: Two 12V x 135 Ah/55H capacity battery bank, serial connected

Fuel tank capacity: 400 liter



Hydraulic System

Main pump: 4 variable displacement direct pumps

Control: Full-flow hydraulic control system for maintainable pressure to all functions, proportional swing. Controls respond instantly to the touch, delivering smooth function operation

Coilings: Direct-air heat exchanger (plate-in type)

Filtration: Full-flow and bypass type with replaceable element

Max. relief valve pressure:

Load hoist, boom hoist and propel systems 31.5 MPa

Swing system: 27.5 MPa

Control system: 5.4 MPa

Hydraulic Tank Capacity: 525 liter



Boom Hoisting System

Power: 4 by a hydraulic motor through a planetary reducer

Brake: A spring-set, hydraulically released multi-plate brake is mounted on the boom hoist motor and operated through a counter-balance valve

Draw Latch: External latch for locking draw

Draw: 21-kg draw, groove for 20-ton dia wire rope

Line Speed: Single line: 30-700 mm/min

Hoisting/Lowering: 18 to 2 rpm

Boom hoisting/lowering: 20mm x 151m

Boom guy line: 24 mm

Boom backstay: Required for all boom length



Load Hoisting System

Foot and rear drums for load hoist powered by a hydraulic variable pump motor, driven through planetary reducers

Hoist Brake: A spring-set, hydraulically released multi-

plate brake is mounted on the hoist motor and operated through a counter-balance valve. For the free fall, brake is released. **Draw Latch:** External latch for locking draw

Draw:

Front Draw:

214mm PC D x 517 mm groove, groove for 20 mm wire rope. Rope capacity is 225 m working length and 262 m storage length

Rear Draw: 214mm PC D x 517 mm groove for 20 mm wire rope. Rope capacity is 225 m working length and 262 m storage length

Diameter of wire rope:

Max. wire: 20 mm x 225 m

Gen. wire: 20 mm x 225 m

Thin wire: 20 mm x 150 m

Line Speed:

Hoisting/Lowering: 18 to 2 rpm

Line Pull:

Max. Line Pull: 200 kN (gross)

(Preferred performance)

Rated Line Pull: 100 kN (110 t)

*High Line Pull is optional



Swing System

Swing motor: Is powered by hydraulic motor driving spur gear through planetary reducer for swing system, provides 360° rotation

Swing parking brake: A spring-set, hydraulically released multi-plate brake is mounted for swing motor

Swing circle: Single row ball bearing with an integral trimally nut swing gear

Swing link: Manually, lock position lock for manipulation

Swing Speed: 3.3 rpm



Upper Structure

Low-profile pedestrian-machined upper frame. All components are located clearly and service-friendly. Engine well with low intake hood

Counter weight: 24.5 ton



Cab & Control

Totally enclosed, full vision cab with safety glass, fully adjustable, high backed seat with a headrest and armrests, and a standard type and window washer (daylight and fog windows)

Cab Fittings:

Air conditioning, convenient storage cabinet for seat, cup holder, cigarette lighter, sun shade, rear view, tinted glass, floor mat, fuel tank, and other items



Lower Structure

Overbuilt steel body with steel. Drive or counterdrives can be hydraulically maintained with track extension or retracted for transport. Counter-belt tension is maintained by hydraulic jack force on the track side drive bearing block.

Carbody weight: 6.5 ton

Counter drive (optional) hydraulic propel drive is built into each crawler side frame. Drive drive consists of a hydraulic motor propelling a driving turbine through a planetary gearbox. Hydraulic motor and gear line connect into the crawler side frame within the drive shaft.

Crawler brakes: Spring-on, hydraulically released parking brakes are built into each propel drive.

Steering mechanism: A hydraulic steering system provides both side steering (driving and track only) and dual counter-rotating steering (driving and track in opposite directions).

Track rollers: Coated track rollers for low ground line wear.

Rise (flat): 500 mm to each crawler

Max. gradeability: 40%



Weight

Including upper and lower mainline, 34.8 ton counterweight or 6.5 ton carbody weight. See 2 figure for upper boom (also 30 hook and other accessories).

Weight: 100 ton

Ground pressure: 30.4 kPa



Attachment

Boom & Jib:

Worked in four configurations using modular high strength steel (steel with pin connection between sections).

Boom and Jib length

	Min. Length (Min. combination)	Max. Length (Max. combination)
Upper Boom	13.2 m	15.1 m
Total Jib	27.4 m + 0.1 m	31.3 m + 0.1 m

Main Specifications (Model: CKR1100G)

Crane Boom	
Max. Lifting Capacity	1700 x 30 m ³
Max. Length	13.1 m
Boom Jib	
Max. Lifting Capacity	1,500 x 20.0 m
Max. Combination	27.4 m + 0.1 m
Main & Aux. Winches	
Max. Line Speed (1st stage)	120 m/min
Rated Line Pull (Single line)	1,000 kN (1,000 t)
Wire Rope Diameter	36 mm
Wire Rope Length	300m (Main), 200m (Aux.)
Power Type (1st & 2nd Winch)	200HP, include the motor (Optional)
Working Speed	
Swing Speed	30,000 (per hr)
Travel Speed	1.41 (km/hr)
Engine Model	
Model	180D405E-177
Engine Output	210kW/285.8HP/3100rpm
Fuel Tank	800 liter

Hydraulic System

Main Pumps	4 Variable Displacement
Max. Pressure	31.4 MPa (310 kg/cm ²)
Hydro. Oil Tank Capacity	400 liters
Anti-Tamper Device	
anti-collision sensor and infrared device	
Weight	
Operating Weight	100 t*
Ground Pressure	30.4 kPa
Counterweight	34,800 kg
Transport Weight	27,400 kg**

180D405E-177 includes counterweight.

Line speeds in table are for 1st stage. Line speed halves with 2nd.

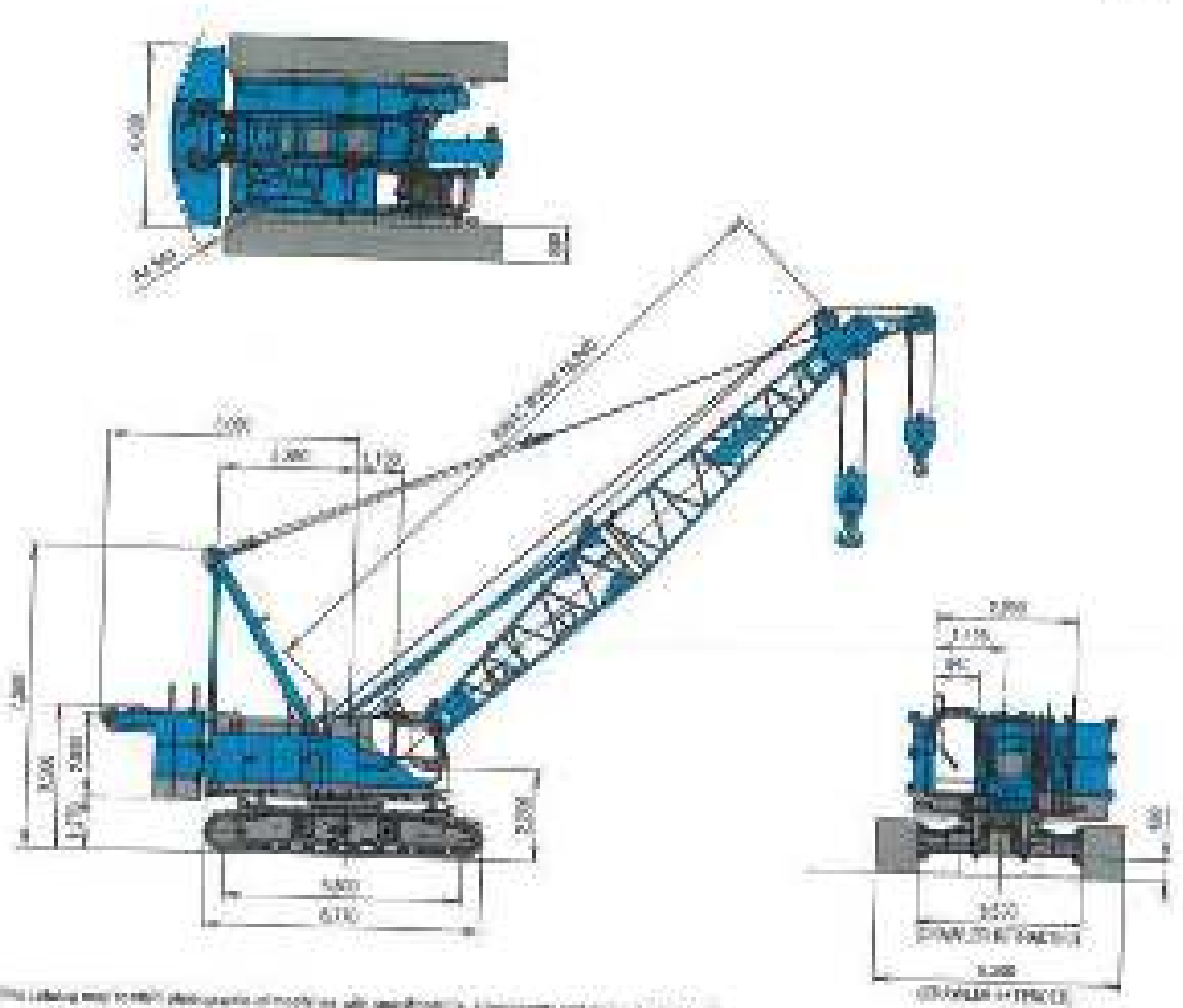
* Including upper and lower mainline, 34.8 ton counterweight, 6.5 ton carbody weight, 30 hook, boom and other accessories.

** Base machine with 20000 liter, jacking system, and 10 m type counterweight.

** Fuel tank capacity is 800 liter.

GENERAL DIMENSIONS

(Unit: mm)



The labeling may be different photographs of models or with specifications, it is for reference and subject to change.

Limit of Hook Lifting



BOOM AND JIB ARRANGEMENTS

Crane Boom Arrangements

Boom length (ft)	Boom arrangement
13.2 (40)	
18.3 (56)	
21.3 (65)	
24.4 (74)	
27.4 (83)	
30.5 (93)	
33.5 (103)	
36.6 (112)	
39.6 (121)	
42.7 (130)	
45.7 (139)	

Boom length (m)	Boom arrangement
4.0 (12.0)	
5.5 (16.8)	
6.5 (19.8)	
7.5 (22.8)	
8.5 (25.9)	
9.5 (29.0)	
10.5 (32.0)	
11.5 (35.1)	
12.5 (38.1)	
13.5 (41.1)	
14.5 (44.2)	
15.5 (47.2)	

Symbol	Boom Length	Remarks
	7.5 m	Boom Base
	8.5 m	Boom Tip
	9.5 m	Main Boom
	10.5 m	Lower Boom
	11.5 m	Upper Boom
	12.5 m	Lower Boom with leg

Symbol shows the boom arrangement. Approximate and not the only possible position when the boom is raised.

If used within the limits of boom arrangement which shows the boom arrangement of between the main boom length 100 ft (30.5 m).

Symbol shows the position of the crane when the boom is raised.

Fixed Jib Arrangements

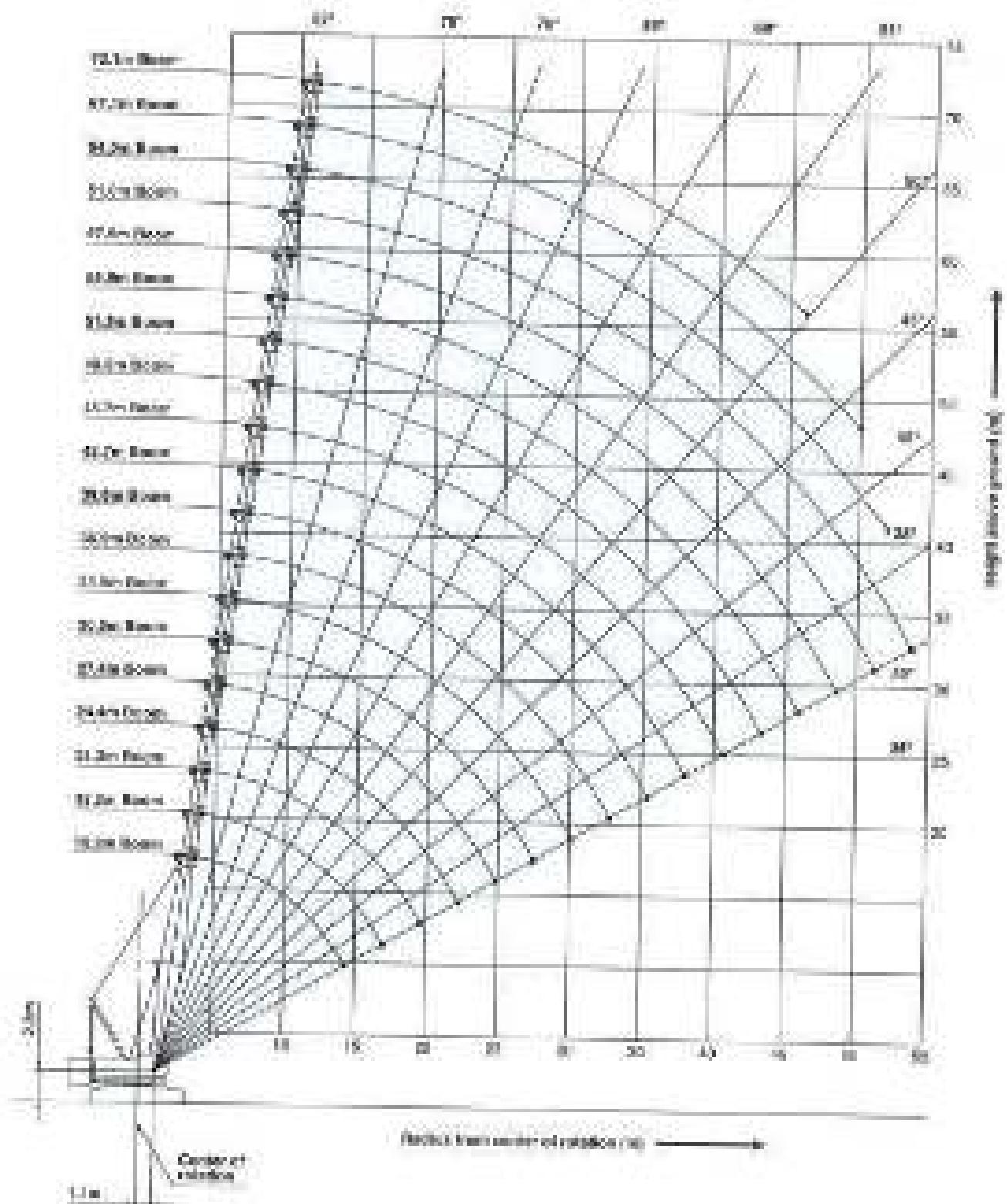


Crane boom length	Jib length (ft)	Jib arrangement
37.4 m ~ 41.2 m	5.1 (15)	
	12.2 (37)	
	15.3 (47)	
	18.3 (56)	
	21.3 (65)	

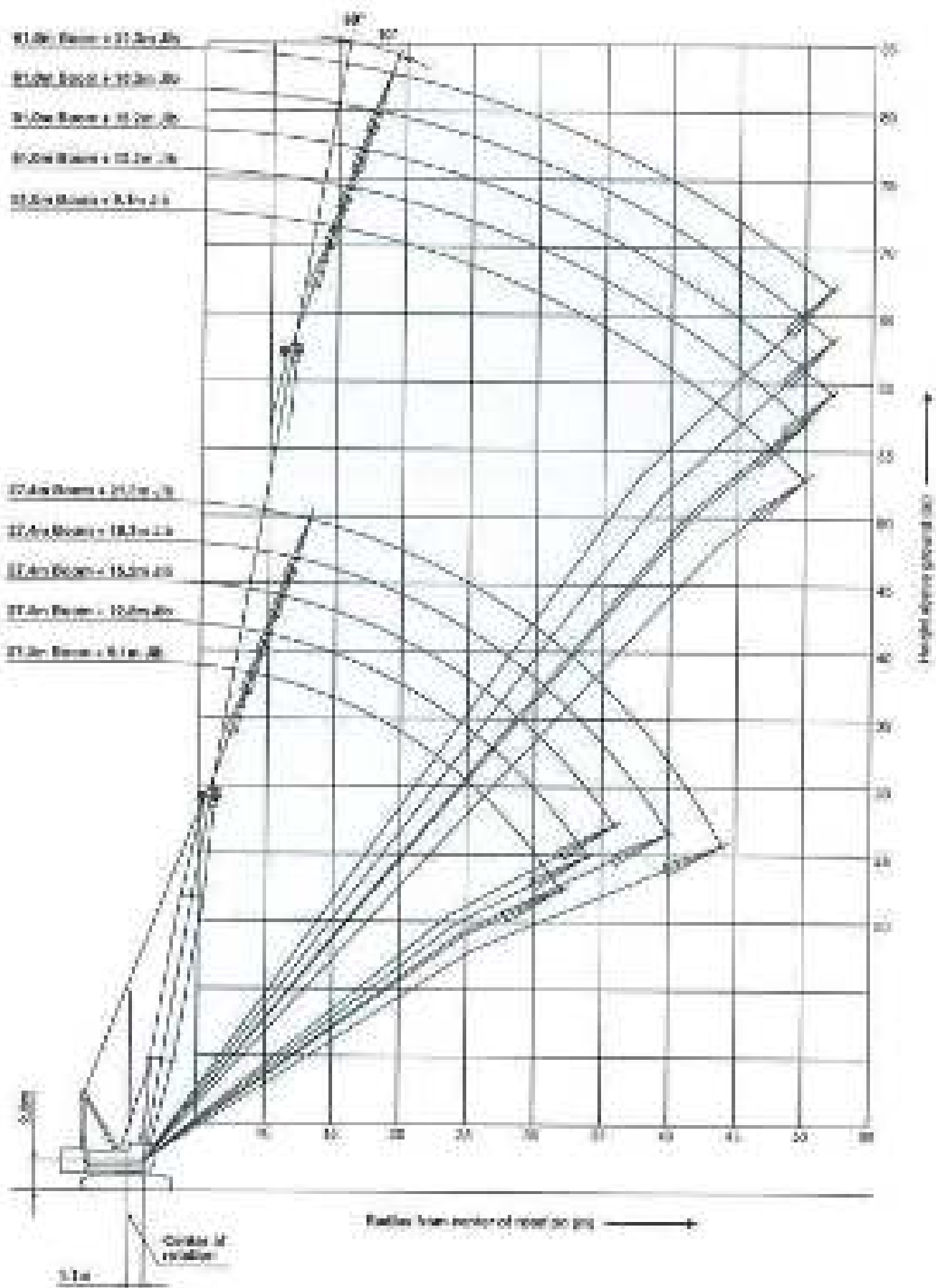
Symbol	Jib Length	Remarks
	4.6 m	Jib Base
	5.1 m	Jib Tip
	5.6 m	Lower Jib
	6.1 m	Upper Jib

WORKING RANGES

Crane Boom

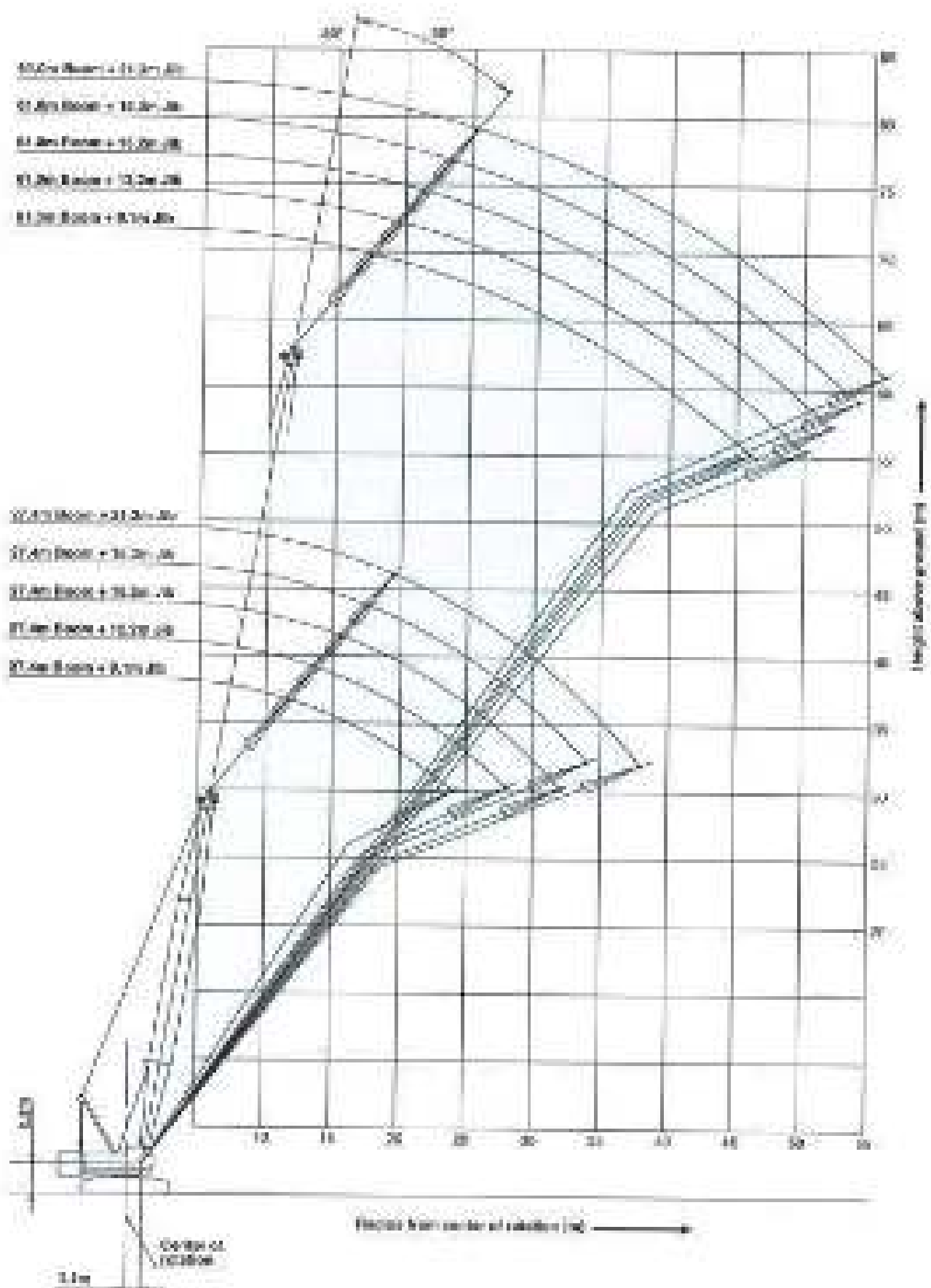


Fixed Jib 10°



WORKING RANGES

Fixed Jib 30°



SUPPLEMENTAL DATA

• Ratings (according to EN13000)

- Operating radius is the horizontal distance from centerline of rotation to a vertical line through the center of gravity of the load.
- Deck weight of non-lifted (i.e., stowed) and other load handling accessories from main boom ratings shown.
- Ratings shown are based on fully suspended loads and not on the allowance for such factors as wind effect on lifted load, ground conditions, ice or snow, operating speeds or any other condition that could be detrimental to the safe operation of the equipment.
- The operator, therefore, has the responsibility to adjust the loading conditions and reduce lifted loads and operating speeds accordingly.
- Ratings are for operation on a firm and level surface, up to 1% gradient.
- At certified boom lengths where no lifting capacity is shown, operation is not intended nor approved.
- Boom bracing and guy lines must be attached, as shown in the "Attachment Manual".
- Boom load rating is 10 psf/lbf.
- Slew rate must be in stowed position for all certified lifts.
- Base load (see item required for all boom lengths).
- The boom cannot be oriented over the front of the truck, tail hoist only.
- Lift capacities of boom (_____) are limited by strength of main lift.
- The minimum rated load is 1.5 (100 lb).
- Drawbar hitch must be fully extended for all crane operations.

• Crane boom lifting

- The total load that can be lifted is the value for weight of main hook block, slings, and all other load handling accessories deducted from crane boom ratings shown.

• Fixed jib lifting

- The total load that can be lifted is the value for weight of jib hook block, slings, and all other load handling accessories deducted from fixed jib ratings shown.
- The availability of fixed jib mounting:
 - On crane boom - Rating 27,400 to 91,000

• Referenced information

Main hoist loads

No. of Parts of Line	1	2	3	4	5
Maximum Lifting Rate	400	200	133	100	80
Maximum Load (lb)	11,200	22,400	33,600	44,800	56,000

No. of Parts of Line	6	7	8	9	10
Maximum Lifting Rate	67	33	22	17	14
Maximum Load (lb)	67,200	33,600	22,400	16,800	13,600

Auxiliary hoist loads

No. of Parts of Line	1	2
Maximum Lifting Rate	100	50
Maximum Load (lb)	3,100	1,550

Weight of hook block				
Hook Block	110'	211'	311'	Full Hook
Weight (lb)	1.7	2.4	3.2	3.75

Dependent on the equipment, it is possible that 1 lb/lb or 0.45 kg/kg of additional weight may be necessary.

LIFTING CAPACITIES



Crane Boom Lifting Capacities

Dimensions in m
Capacity in tons

Lifting height m	Lifting radius										Lifting height m	
	16.0	18.0	21.0	24.0	27.0	30.0	33.0	36.0	39.0	42.0		
3.0	34-115.1											3.0
4.0	53.5	4-100.1	4-95.0									4.0
5.0	72.7	71.7	71.7	71.1	65-105.1	65.0						5.0
6.0	92.0	91.2	90.3	89.3	83.7	83.7						6.0
7.0	101.8	95.2	92.3	92.7	81.0	81.0	50-102.4	60-117.7				7.0
8.0	111.5	104.4	101.4	102.2	90.2	90.7	69.4	69.0	70-102.1	70-102.8		8.0
9.0	121.0	113.3	110.4	112.0	99.3	99.3	78.3	78.5	79.8	79.7		9.0
10.0	130.5	122.4	119.5	122.0	108.3	108.7	87.2	87.5	89.8	89.5		10.0
12.0	150.3	142.0	139.1	141.7	127.1	127.1	106.0	106.0	108.8	108.1		12.0
14.0	170.8	161.7	158.8	161.4	146.0	146.0	124.8	124.8	128.0	127.0		14.0
16.0	191.0	171.4	168.5	171.1	165.0	165.0	143.6	143.6	147.2	146.0		16.0
18.0		191.0	188.1	190.7	184.6	184.6	162.4	162.4	166.0	164.8		18.0
20.0			207.0	204.1	208.0	208.0	181.2	181.2	184.8	183.6		20.0
22.0				227.0	224.1	228.0	200.0	200.0	203.6	202.4		22.0
24.0					247.0	244.1	218.8	218.8	222.4	221.2		24.0
26.0						267.0	247.6	247.6	251.2	250.0		26.0
28.0							267.0	267.0	270.6	269.4		28.0
30.0								286.4	289.9	288.7		30.0
32.0									308.4	307.2		32.0
34.0										328.0		34.0
36.0											328.0	36.0
38.0												38.0
40.0												40.0
Notes	12	0	6	7	8	9	2	3	4	5, 6, 7, 8		Notes

Lifting height m	Lifting radius									Lifting height m	
	41.0	45.0	51.0	57.0	63.0	69.0	75.0	81.0	87.0		
6.0	5-100.4	5-100.4									6.0
8.0	30.4	31.7	3-100.4	3-100.4							8.0
10.0	35.1	36.4	37.7	37.0	26.1	5-100.4	5-100.4	5-100.4	5-100.4	5-100.4	10.0
12.0	39.8	41.1	42.4	41.7	30.8	35.4	30.8	30.8	30.8	30.8	12.0
14.0	44.5	45.8	47.1	46.4	35.5	40.7	35.5	35.5	35.5	35.5	14.0
16.0	49.2	50.5	51.8	51.1	40.2	46.0	40.2	40.2	40.2	40.2	16.0
18.0	53.9	55.2	56.5	55.8	44.9	51.3	44.9	44.9	44.9	44.9	18.0
20.0	58.6	59.9	61.2	60.5	49.6	56.6	49.6	49.6	49.6	49.6	20.0
22.0	63.3	64.6	65.9	65.2	54.3	61.9	54.3	54.3	54.3	54.3	22.0
24.0	68.0	69.3	70.6	69.9	59.0	67.2	59.0	59.0	59.0	59.0	24.0
26.0	72.7	74.0	75.3	74.6	63.7	72.5	63.7	63.7	63.7	63.7	26.0
28.0	77.4	78.7	80.0	79.3	68.4	77.8	68.4	68.4	68.4	68.4	28.0
30.0	82.1	83.4	84.7	84.0	73.1	83.1	73.1	73.1	73.1	73.1	30.0
32.0	86.8	88.1	89.4	88.7	77.8	88.4	77.8	77.8	77.8	77.8	32.0
34.0	91.5	92.8	94.1	93.4	82.5	93.7	82.5	82.5	82.5	82.5	34.0
36.0	96.2	97.5	98.8	98.1	87.2	99.0	87.2	87.2	87.2	87.2	36.0
38.0	100.9	102.2	103.5	102.8	91.9	104.3	91.9	91.9	91.9	91.9	38.0
40.0	105.6	106.9	108.2	107.5	96.6	109.6	96.6	96.6	96.6	96.6	40.0
42.0	110.3	111.6	112.9	112.2	101.3	114.9	101.3	101.3	101.3	101.3	42.0
44.0	115.0	116.3	117.6	116.9	106.0	120.2	106.0	106.0	106.0	106.0	44.0
46.0	119.7	121.0	122.3	121.6	110.7	125.5	110.7	110.7	110.7	110.7	46.0
48.0	124.4	125.7	127.0	126.3	115.4	130.8	115.4	115.4	115.4	115.4	48.0
50.0	129.1	130.4	131.7	131.0	120.1	136.1	120.1	120.1	120.1	120.1	50.0
52.0	133.8	135.1	136.4	135.7	124.8	141.4	124.8	124.8	124.8	124.8	52.0
54.0	138.5	139.8	141.1	140.4	129.5	146.7	129.5	129.5	129.5	129.5	54.0
Notes	4	3	8	7	3	2	3	2	1		Notes

Notes:
 1. Ratings according to EN 13055.
 2. Ratings above 100 tons are determined by the strength of the boom or other structural components.
 3. All capacities may vary depending on configuration and other factors. Capacity values are approximate.
 4. Please refer to the manual for operating details.

LIFTING CAPACITIES



Fixed Jib Lifting Capacities (Without Main Hook Block) (Jib Offset Angle: 10°)

Capacity (kg): 2.0 t
 Capacity Weight: 0.1 t

Unit: mm

Capacity (kg)	45.7					49.2					53.8					Capacity (kg)
	5.1	12.2	18.3	24.4	30.5	5.1	12.2	18.3	24.4	30.5	5.1	12.2	18.3	24.4	30.5	
14.0	10.5	16.7				11.9	18.1				13.3					14.0
16.0	10.9	17.4	13.0	17.9		12.6	19.0	14.1	19.4		14.0	19.4	14.1			16.0
18.0	11.4	18.2	13.8	19.0	18.9	13.3	19.9	15.0	20.6	19.9	14.7	20.6	15.0	20.6	19.9	18.0
20.0	11.8	19.0	14.6	20.0	19.9	14.0	20.8	15.9	21.4	20.9	15.4	21.4	15.9	21.4	20.9	20.0
22.0	12.3	19.8	15.4	21.0	20.9	14.7	21.7	16.8	22.3	21.9	16.1	22.3	16.8	22.3	21.9	22.0
24.0	12.7	20.6	16.2	22.0	21.9	15.4	22.6	17.7	23.2	22.9	16.8	23.2	17.7	23.2	22.9	24.0
26.0	13.1	21.4	17.0	23.0	22.9	16.1	23.5	18.6	24.1	23.9	17.5	24.1	18.6	24.1	23.9	26.0
28.0	13.5	22.2	17.8	24.0	23.9	16.8	24.4	19.5	25.0	24.9	18.2	25.0	19.5	25.0	24.9	28.0
30.0	13.9	23.0	18.6	25.0	24.9	17.5	25.3	20.4	25.9	25.9	19.0	25.9	20.4	25.9	25.9	30.0
32.0	14.3	23.8	19.4	26.0	25.9	18.2	26.2	21.3	26.8	26.9	19.7	26.8	21.3	26.8	26.9	32.0
34.0	14.7	24.6	20.2	27.0	26.9	18.9	27.1	22.2	27.7	27.9	20.4	27.7	22.2	27.7	27.9	34.0
36.0	15.1	25.4	21.0	28.0	27.9	19.6	28.0	23.1	28.6	28.9	21.1	28.6	23.1	28.6	28.9	36.0
38.0	15.5	26.2	21.8	29.0	28.9	20.3	28.9	24.0	29.5	29.9	21.8	29.5	24.0	29.5	29.9	38.0
40.0	15.9	27.0	22.6	30.0	29.9	21.0	29.8	24.9	30.4	30.9	22.5	30.4	24.9	30.4	30.9	40.0
42.0	16.3	27.8	23.4	31.0	30.9	21.7	30.7	25.8	31.3	31.9	23.2	31.3	25.8	31.3	31.9	42.0
44.0	16.7	28.6	24.2	32.0	31.9	22.4	31.6	26.7	32.2	32.9	23.9	32.2	26.7	32.2	32.9	44.0
46.0	17.1	29.4	25.0	33.0	32.9	23.1	32.5	27.6	33.1	33.9	24.6	33.1	27.6	33.1	33.9	46.0
48.0	17.5	30.2	25.8	34.0	33.9	23.8	33.4	28.5	34.0	34.9	25.3	34.0	28.5	34.0	34.9	48.0
50.0	17.9	31.0	26.6	35.0	34.9	24.5	34.3	29.4	34.9	35.9	26.0	34.9	29.4	34.9	35.9	50.0
52.0	18.3	31.8	27.4	36.0	35.9	25.2	35.2	30.3	35.8	36.9	26.7	35.8	30.3	35.8	36.9	52.0
54.0	18.7	32.6	28.2	37.0	36.9	25.9	36.1	31.2	36.7	37.9	27.4	36.7	31.2	36.7	37.9	54.0
56.0	19.1	33.4	29.0	38.0	37.9	26.6	37.0	32.1	37.6	38.9	28.1	37.6	32.1	37.6	38.9	56.0
58.0	19.5	34.2	29.8	39.0	38.9	27.3	37.9	33.0	38.5	39.9	28.8	38.5	33.0	38.5	39.9	58.0
60.0	19.9	35.0	30.6	40.0	39.9	28.0	38.8	33.9	39.4	40.9	29.5	39.4	33.9	39.4	40.9	60.0
62.0	20.3	35.8	31.4	41.0	40.9	28.7	39.7	34.8	40.3	41.9	30.2	40.3	34.8	40.3	41.9	62.0
64.0	20.7	36.6	32.2	42.0	41.9	29.4	40.6	35.7	41.2	42.9	30.9	41.2	35.7	41.2	42.9	64.0
66.0	21.1	37.4	33.0	43.0	42.9	30.1	41.5	36.6	42.1	43.9	31.6	42.1	36.6	42.1	43.9	66.0
68.0	21.5	38.2	33.8	44.0	43.9	30.8	42.4	37.5	43.0	44.9	32.3	43.0	37.5	43.0	44.9	68.0
70.0	21.9	39.0	34.6	45.0	44.9	31.5	43.3	38.4	43.9	45.9	33.0	43.9	38.4	43.9	45.9	70.0
72.0	22.3	39.8	35.4	46.0	45.9	32.2	44.2	39.3	44.8	46.9	33.7	44.8	39.3	44.8	46.9	72.0
74.0	22.7	40.6	36.2	47.0	46.9	32.9	45.1	40.2	45.7	47.9	34.4	45.7	40.2	45.7	47.9	74.0
76.0	23.1	41.4	37.0	48.0	47.9	33.6	46.0	41.1	46.6	48.9	35.1	46.6	41.1	46.6	48.9	76.0
78.0	23.5	42.2	37.8	49.0	48.9	34.3	46.9	42.0	47.5	49.9	35.8	47.5	42.0	47.5	49.9	78.0
80.0	23.9	43.0	38.6	50.0	49.9	35.0	47.8	42.9	48.4	50.9	36.5	48.4	42.9	48.4	50.9	80.0
82.0	24.3	43.8	39.4	51.0	50.9	35.7	48.7	43.8	49.3	51.9	37.2	49.3	43.8	49.3	51.9	82.0
84.0	24.7	44.6	40.2	52.0	51.9	36.4	49.6	44.7	50.2	52.9	37.9	50.2	44.7	50.2	52.9	84.0
86.0	25.1	45.4	41.0	53.0	52.9	37.1	50.5	45.6	51.1	53.9	38.6	51.1	45.6	51.1	53.9	86.0
88.0	25.5	46.2	41.8	54.0	53.9	37.8	51.4	46.5	52.0	54.9	39.3	52.0	46.5	52.0	54.9	88.0
90.0	25.9	47.0	42.6	55.0	54.9	38.5	52.3	47.4	52.9	55.9	40.0	52.9	47.4	52.9	55.9	90.0
92.0	26.3	47.8	43.4	56.0	55.9	39.2	53.2	48.3	53.8	56.9	40.7	53.8	48.3	53.8	56.9	92.0
94.0	26.7	48.6	44.2	57.0	56.9	39.9	54.1	49.2	54.7	57.9	41.4	54.7	49.2	54.7	57.9	94.0
96.0	27.1	49.4	45.0	58.0	57.9	40.6	55.0	50.1	55.6	58.9	42.1	55.6	50.1	55.6	58.9	96.0
98.0	27.5	50.2	45.8	59.0	58.9	41.3	55.9	51.0	56.5	59.9	42.8	56.5	51.0	56.5	59.9	98.0
100.0	27.9	51.0	46.6	60.0	59.9	42.0	56.8	51.9	57.4	60.9	43.5	57.4	51.9	57.4	60.9	100.0
102.0	28.3	51.8	47.4	61.0	60.9	42.7	57.7	52.8	58.3	61.9	44.2	58.3	52.8	58.3	61.9	102.0
104.0	28.7	52.6	48.2	62.0	61.9	43.4	58.6	53.7	59.2	62.9	44.9	59.2	53.7	59.2	62.9	104.0
106.0	29.1	53.4	49.0	63.0	62.9	44.1	59.5	54.6	60.1	63.9	45.6	60.1	54.6	60.1	63.9	106.0
108.0	29.5	54.2	49.8	64.0	63.9	44.8	60.4	55.5	61.0	64.9	46.3	61.0	55.5	61.0	64.9	108.0
110.0	29.9	55.0	50.6	65.0	64.9	45.5	61.3	56.4	61.9	65.9	47.0	61.9	56.4	61.9	65.9	110.0
112.0	30.3	55.8	51.4	66.0	65.9	46.2	62.2	57.3	62.8	66.9	47.7	62.8	57.3	62.8	66.9	112.0
114.0	30.7	56.6	52.2	67.0	66.9	46.9	63.1	58.2	63.7	67.9	48.4	63.7	58.2	63.7	67.9	114.0
116.0	31.1	57.4	53.0	68.0	67.9	47.6	64.0	59.1	64.6	68.9	49.1	64.6	59.1	64.6	68.9	116.0
118.0	31.5	58.2	53.8	69.0	68.9	48.3	64.9	60.0	65.5	69.9	49.8	65.5	60.0	65.5	69.9	118.0
120.0	31.9	59.0	54.6	70.0	69.9	49.0	65.8	60.9	66.4	70.9	50.5	66.4	60.9	66.4	70.9	120.0
122.0	32.3	59.8	55.4	71.0	70.9	49.7	66.7	61.8	67.3	71.9	51.2	67.3	61.8	67.3	71.9	122.0
124.0	32.7	60.6	56.2	72.0	71.9	50.4	67.6	62.7	68.2	72.9	51.9	68.2	62.7	68.2	72.9	124.0
126.0	33.1	61.4	57.0	73.0	72.9	51.1	68.5	63.6	69.1	73.9	52.6	69.1	63.6	69.1	73.9	126.0
128.0	33.5	62.2	57.8	74.0	73.9	51.8	69.4	64.5	70.0	74.9	53.3	70.0	64.5	70.0	74.9	128.0
130.0	33.9	63.0	58.6	75.0	74.9	52.5	70.3	65.4	70.9	75.9	54.0	70.9	65.4	70.9	75.9	130.0
132.0	34.3	63.8	59.4	76.0	75.9	53.2	71.2	66.3	71.8	76.9	54.7	71.8	66.3	71.8	76.9	132.0
134.0	34.7	64.6	60.2	77.0	76.9	53.9	72.1	67.2	72.7	77.9	55.4	72.7	67.2	72.7	77.9	134.0
136.0	35.1	65.4	61.0	78.0	77.9	54.6	73.0	68.1	73.6	78.9	56.1	73.6	68.1	73.6	78.9	136.0
138.0	35.5	66.2	61.8	79.0	78.9	55.3	73.9	69.0	74.5	79.9	56.8	74.5	69.0	74.5	79.9	138.0
140.0	35.9	67.0	62.6	80.0	79.9	56.0	74.8	69.9	75.4	80.9	57.5	75.4	69.9	75.4	80.9	140.0
142.0	36.3	67.8	63.4	81.0	80.9	56.7	75.7	70.8	76.3	81.9	58.2	76.3	70.8	76.3	81.9	142.0
144.0	36.7	68.6	64.2	82.0	81.9	57.4	76.6	71.7	77.2	82.9	58.9	77.2	71.7	77.2	82.9	144.0
146.0	37.1	69.4	65.0	83.0	82.9	58.1	77.5	72.6	78.1	83.9	59.6	78.1	72.6	78.1	83.9	146.0
148.0	37.5	70.2	65.8	84.0	83.9	58.8	78.4	73.5	79.0	84.9	60.3	79.0	73.5	79.0	84.9	148.0
150.0	37.9	71.0	66.6	85.0	84.9	59.5	79.3	74.4	79.9	85.9	61.0	79.9	74.4	79.9	85.9	150.0
152.0	38.3	71.8	67.4	86.0	85.9	60.2	80.2	75.3	80.8	86.9	61.7	80.8	75.3	80.8	86.9	152.0
154.0	38.7	72.6	68.2	87.0	86.9	60.9	81.1	76.2	81.7	87.9	62.4	81.7	76.2	81.7	87.9	154.0
156.0	39.1	73.4	69.0	88.0	87.9	61.6	82.0	77.1	82.6	88.9	63.1	82.6	77.1	82.6	88.9	156.0
158.0	39.5	74.2	69.8	89.0	88.9	62.3	82.9	78.0	83.5	89.9	63.8	83.5	78.0	83.5	89.9	158.0
160.0	39.9	75.0	70.6	90.0	89.9	63.0	83.8	78.9	84.4	90.9	64.5	84.4	78.9	84.4	90.9	160.0
162.0	40.3	75.8	71.4	91.0	90.9	63.7	84.7	79.8	85.3	91.9	65.2	85.3	79.8	85.3	91.9	162.0
164.0	40.7	76.6	72.2													

Fixed Jib Lifting Capacities (Without Main Hook Block) (Jib Offset Angle : 30°)

Doc No. LHM-01-34.2
Rev. 01 to LHM-01-34.2

(in Metric Unit)

Main hook (t)	21.4					33.6					33.8					Main hook (t) at height (m)
	8.1	12.2	18.3	18.3	21.2	8.1	12.2	18.3	18.3	21.2	8.1	12.2	18.3	18.3	21.2	
12.0	8.5										9.5					12.0
14.0	9.5	7.0				9.8					9.8					14.0
16.0	9.6	7.0	7.3			9.9	7.7				9.8	7.2				16.0
18.0	9.5	7.3	8.0	4.2		9.9	7.0	8.2			9.7	7.2	8.2			18.0
20.0	9.1	7.3	8.2	4.7	4.2	9.9	7.0	8.2	4.2		9.8	7.0	8.2			20.0
22.0	8.7	8.7	8.2	4.2	4.2	9.8	6.8	8.7	4.2		9.8	7.0	8.2	4.2		22.0
24.0	8.8	8.4	8.1	4.2	3.7	9.9	6.5	8.7	4.2	1.1	9.8	7.0	8.2	4.2	4.1	24.0
26.0		8.1	4.8	4.1	3.8	9.8	6.5	8.0	4.2	1.8	9.8	8.1	8.2	4.2	3.9	26.0
28.0		8.8	3.9	3.9	3.2	9.7	6.2	4.8	4.2	1.4	9.1	8.2	6.9	4.1	3.2	28.0
30.0			4.3	3.7	3.2		6.8	4.6	3.8	3.2	7.3	4.3	4.7	3.8	3.3	30.0
32.0			4.2	3.8	3.3			4.4	3.7	3.1		4.8	3.8	3.8	3.8	32.0
34.0				1.4	2.7											34.0
36.0					2.2											36.0
38.0					2.1											38.0
40.0																40.0
Remarks	1	1	1	1	1	1	1	1	1	1	1	1	1	1	1	Remarks

Main hook (t)	26.8					38.8					40.7					Main hook (t) at height (m)
	8.1	12.2	18.3	18.3	21.2	8.1	12.2	18.3	18.3	21.2	8.1	12.2	18.3	18.3	21.2	
14.0	8.5															14.0
16.0	8.5	7.0				9.5										16.0
18.0	8.6	7.0	8.2			9.6	7.8	8.2			9.8	7.0				18.0
20.0	9.7	7.2	8.2	3.2		9.5	7.0	8.2			9.8	7.0				20.0
22.0	9.2	7.3	8.2	4.2	4.2	9.5	7.0	8.2	4.2	4.2	9.8	7.0	8.2			22.0
24.0	8.7	8.9	8.2	4.2	4.8	9.5	7.0	8.2	4.2	4.0	9.8	7.3	8.2	4.2	4.1	24.0
26.0	8.7	8.8	8.2	4.2	3.8	9.8	6.7	8.1	4.2	3.8	9.7	8.1	8.2	4.2	3.8	26.0
28.0	8.0	8.5	8.2	4.2	3.6	7.9	6.3	8.1	4.2	3.6	7.8	8.0	8.2	4.2	3.7	28.0
30.0	7.5	8.1	4.8	4.0	3.4	7.1	6.2	6.9	4.1	3.3	7.0	8.4	4.2	3.8	30.0	
32.0	8.1	8.8	4.7	3.8	3.3	6.4	6.1	4.8	3.8	3.3	8.3	6.2	4.9	4.0	3.0	32.0
34.0		8.7	4.6	3.7	3.1		5.8	4.4	3.8	3.0	8.7	6.1	4.7	3.9	3.0	34.0
36.0			4.4	3.8	3.0		6.4	4.5	3.7	3.1	8.2	6.1	4.6	3.7	3.2	36.0
38.0			4.2	3.8	2.8			4.3	3.5	2.8		6.9	6.4	3.6	3.1	38.0
40.0				3.8	2.6								4.2	3.3	3.3	40.0
42.0					2.7											42.0
44.0					2.3											44.0
46.0																46.0
Remarks	1	1	1	1	1	1	1	1	1	1	1	1	1	1	1	Remarks

Note:
 Ratings according to EN15705.
 Ratings depend on and are limited by the design of the hook or other lifting components.
 Lifting capacities in the sky depending on hook type or additional hook packages.
 Contact your sales agent for detailed information.

LIFTING CAPACITIES



Fixed Jib Lifting Capacities (Without Main Hook Block) (Jib Offset Angle : 30°)

100% Service : 100% Capacity
 50% Service : 50% Capacity

Capacity (t)

Main Hook (t)	45.7					48.8					51.8					Main Hook (t)
	8.1	12.2	15.2	18.2	21.3	8.1	12.2	15.2	18.2	21.3	8.1	12.2	15.2	18.2	21.3	
18.0	9.5					9.5					9.5					18.0
18.0	9.5	7.0				9.5	7.0				9.5	7.0				18.0
22.0	9.5	7.0	5.5			9.5	7.0	5.5			9.5	7.0	5.5			22.0
22.0	9.5	7.0	5.5	4.0		9.5	7.0	5.5	4.0		9.5	7.0	5.5	4.0		22.0
24.0	9.5	7.0	5.5	4.0	3.1	9.5	7.0	5.5	4.0	3.1	9.5	7.0	5.5	4.0	3.1	24.0
26.0	9.5	7.0	5.5	4.0	3.0	9.5	7.0	5.5	4.0	3.0	9.5	7.0	5.5	4.0	3.0	26.0
28.0	7.0	6.8	5.3	4.0	3.4	7.0	6.8	5.3	4.0	3.3	7.0	6.8	5.3	4.0	3.3	28.0
28.0	6.0	6.2	5.1	4.0	3.6	6.0	6.2	5.2	4.0	3.7	6.0	6.2	5.2	4.0	3.7	28.0
32.0	6.1	6.2	5.2	4.1	3.8	6.1	6.3	5.3	4.1	3.5	6.0	6.2	5.1	4.0	3.6	32.0
34.0	6.0	6.7	4.8	3.8	3.9	6.0	6.7	4.9	4.0	3.4	5.4	5.3	5.0	4.1	3.4	34.0
36.0	6.0	6.3	4.7	3.8	3.9	4.8	5.1	4.7	3.8	3.3	4.8	5.0	4.6	3.9	3.3	36.0
38.0	4.0	4.7	4.8	3.7	3.1	4.8	5.6	4.6	3.8	3.2	4.4	4.3	4.7	3.6	3.7	38.0
42.0			4.0	3.6	3.0		4.2	4.4	3.7	3.1	5.6	4.3	4.2	3.7	3.1	42.0
42.0			4.0	3.5	3.0		4.0	4.1	3.6	3.0		3.7	3.9	3.6	3.1	42.0
44.0				3.4	2.8			3.8	3.5	3.0		3.4	3.6	3.4	3.1	44.0
46.0					2.8				3.4	3.0			3.2	3.3	3.1	46.0
48.0					2.7					2.7				3.0	2.8	48.0
50.0					2.4					2.7				2.7	2.7	50.0
52.0														2.5	2.5	52.0
Reverse	1	1	1	1	1	1	1	1	1	1	1	1	1	1	1	Reverse

Main Hook (t)	45.7					51.8					57.8					Main Hook (t)
	8.1	12.2	15.2	18.2	21.3	8.1	12.2	15.2	18.2	21.3	8.1	12.2	15.2	18.2	21.3	
18.0	9.5					9.5					9.5					18.0
20.0	9.5	7.0				9.5	7.0				9.5	7.0				20.0
20.0	9.5	7.0	5.5			9.5	7.0	5.5			9.5	7.0	5.5			20.0
24.0	6.0	7.0	5.5	4.0		6.0	7.0	5.5	4.0		6.0	7.0	5.5	4.0		24.0
26.0	6.0	7.0	5.5	4.0	3.1	6.1	7.0	5.5	4.0	3.1	6.1	7.0	5.5	4.0	3.1	26.0
26.0	7.0	7.0	5.5	4.0	3.4	7.0	7.0	5.5	4.0	3.3	7.0	7.0	5.5	4.0	3.3	26.0
28.0	6.0	6.2	5.3	4.0	3.4	6.4	6.8	5.8	4.2	3.8	6.3	6.6	5.8	4.2	3.3	28.0
28.0	5.0	6.1	5.3	4.0	3.6	5.7	6.4	5.2	4.2	3.7	5.8	6.0	5.0	4.1	3.7	28.0
34.0	6.0	6.4	5.4	4.1	3.8	6.1	6.3	5.1	4.2	3.5	6.1	6.0	5.2	4.2	3.5	34.0
36.0	4.0	4.8	4.8	4.0	3.4	4.6	4.8	4.0	4.1	3.4	4.5	4.7	4.0	4.1	3.5	36.0
38.0	4.0	4.4	4.1	3.8	3.2	4.1	4.3	4.4	3.6	3.1	4.1	4.2	4.4	4.0	3.4	38.0
42.0	3.0	4.1	4.1	3.8	3.2	3.7	3.8	4.0	3.6	3.2	3.9	3.8	3.8	3.8	3.1	42.0
42.0	3.4	3.6	3.7	3.7	3.1	3.8	3.9	4.0	3.7	3.1	3.8	3.8	3.8	3.7	3.2	42.0
44.0	3.1	3.2	3.4	3.2	3.0	3.6	3.1	3.2	3.4	3.1	3.6	3.0	3.2	3.3	3.1	44.0
46.0			3.0	3.0	3.0		2.7	2.9	3.0	3.1	2.4	2.6	2.8	2.9	3.0	46.0
48.0			2.7	2.9	3.0			3.0	3.0	3.0		3.0	3.0	3.0	3.0	48.0
50.0				2.6	2.7			2.8	2.8	2.8		3.0	3.1	2.9	2.4	50.0
52.0					2.4				2.1	2.7			1.8	2.3	2.1	52.0
54.0					2.1					2.8				1.7	1.8	54.0
56.0										1.7					1.6	56.0
Reverse	1	1	1	1	1	1	1	1	1	1	1	1	1	1	1	Reverse

Note:

Lifting capacity is limited to 100%.

Weight value of kg will be used by the client for the purpose of the crane's rated capacity.

Lifting capacities are only applicable for fixed jibs, or with fixed jib offset angles.

Please refer to the crane's manual for details.

SUPPLEMENTAL DATA FOR CLAMSHELL RATING CHART

- Operating radius is the horizontal clearance from centerline of rotation to a vertical line through the center of gravity of the load.
- Deduct weight of bucket, slings and all other load handling accessories from rated bucket weight shown.
- Ratings shown are based on freely suspended loads and make no allowance for such factors as wind effect on lifted load, ground conditions, out-of-level or varying speeds or any other condition that could be detrimental to the safe operation of this equipment. The operator has the responsibility to judge the existing conditions and make a lifted bucket and operating speeds accordingly.
- Rated loads do not exceed 80% of rated lifting capacity.
- The operator for operation on a firm and level surface, up to 1% gradient.
- All additional boom lengths when not using telescopic booms in strict operation is not intended nor approved.
- Boom inserts and guy lines must be installed as shown in the operator's manual.
- Boom hook, having a 1" O.D. pin fits.
- Capacity must be installed properly for all conditions.
- Boom ladders are required for all boom lengths.
- The boom should be retracted over the front of the counterweight assembly.
- Counter frames must be fully extended for all crane positions.

(Clamshell bucket filling)

- The rated load that can be lifted is the value less weight of bucket, slings, and all other load handling accessories deducted from rated bucket ratings shown.
- The weight of the load and materials must not exceed rated load.
- Operator's bucket should be regulated according to material.
- Bucket capacity (bu) = specified gravity of material (jumbo) x bucket weight (buw) = rated load.
- Bucket weight must also be decreased according to operating cycle and bucket filling height.
- Rated loads are determined by stability and boom strength. During initial practice operation of boom and swing, rapid acceleration or deceleration must be avoided.
- Do not attempt to lift the bucket while swinging or diagonal derricking.

-Reference Information

Math Not at Issue

Wt. of Bucket (bu)	1
Maximum Load (ML)	10
Maximum Loads (L)	10.0

Assembling the counterweight

25.1 lbs counterweight
 25.1 lbs body weight



Counterweight

Counterweight

Counterweight

Counterweight

Counterweight

Counterweight

Counterweight

Counterweight

Counterweight

Counterweight

Counterweight

Counterweight

Counterweight

Counterweight

Counterweight

Counterweight

Counterweight

Counterweight

Counterweight

Counterweight

Counterweight

Counterweight

Counterweight

Counterweight

Counterweight

Counterweight

Counterweight

Counterweight

Counterweight

Counterweight

Counterweight

Counterweight

Counterweight

Operator of this equipment is aware of rated loads in regard of his rated load the stability.



LIFTING CAPACITIES



Clamshell Rating Charts Crane Boom Capacities

Capacity limited by
boom length, configuration, height
and load radius
© 2011 Clamshell LLC

Boom Length (ft)	15.2	18.2	21.2	24.2						Boom Length (ft)
7.0	10.0									7.0
8.0	10.0	10.0								8.0
9.0	10.0	10.0	10.0							9.0
10.0	10.0	10.0	10.0	10.0	8.4					10.0
11.0	10.0	10.0	10.0	10.0	8.3					11.0
12.0	10.0	10.0	10.0	10.0	8.2					12.0
13.0	10.0	10.0	10.0	10.0	8.1					13.0
14.0	10.0	10.0	10.0	10.0	8.1					14.0
15.0		10.0	10.0	10.0	8.1					15.0
16.0		9.0	9.0	9.0	8.0					16.0
17.0			8.0	8.0	8.0					17.0
18.0			8.0	8.0	8.0					18.0
19.0			7.0	8.0	8.0					19.0
20.0				7.0	8.0					20.0
21.0				7.0	8.0					21.0
22.0										22.0
23.0										23.0
24.0										24.0
25.0										25.0
26.0										26.0
27.0										27.0
28.0										28.0
29.0										29.0
30.0										30.0
31.0										31.0
32.0										32.0
33.0										33.0
Notes	1	1	1	1						Notes

Note:
Please refer to manual for complete details.

SUPPLEMENTAL DATA FOR REDUCED WEIGHTS RATING CHART

- Rating according to EN13003.
- Operating radius is the level distance from the axis of rotation to a vertical line through the center of gravity of the load.
- Deduct weight of hook block(s), slings and all other load handling accessories from main boom ratings shown.
- Ratings shown are based on heavy suspended loads and no other allowance for such factors as wind effect on the load, ground conditions, out-of-level, operating speeds or any other condition that could be detrimental to the safe operation of the equipment. The operator, therefore, has the responsibility to judge the working conditions and make suitable adjustments accordingly.
- Ratings are for operation on a firm and level surface, as is the platform.
- An asterisk (*) next to length where it's shown in brackets on chart, signifies not intended not approved.
- Boom heels and gussets must be checked as shown in the operator's manual.
- Boom heel wearing is 10 per cent.
- Climbing and latching points provided for all booms.
- Boom latches are required for all boom lengths.
- The boom should be checked over the front of the machine, not directly.
- Rating marks of booms [] are limited by strength of material.
- The minimum rated load is 1.5 ton.
- Counter balance bar fully extended for all boom operations.

(Crane boom fitting)

The total load that can be lifted to the rated lift weight of hook block, rope, and all other load handling accessories deducted from main boom ratings shown.

Counterweight	Capacity weight	Boom length	
		A (Total load)	Weight (a)
1.5 ton	Weight	15.0 m ~ 20.0 m	16.0 m ~ 21.0 m

Assembling the counterweight (B) to the counterweight without cables weight



Reference information

Main boom loads

No. of Parts of Line	1	2	3	4	5
Maximum Loads (kg)	270	270	320	401	470
Maximum Loads (t)	11.25	11.25	13.00	16.15	19.00

No. of Parts of Line	6	7	8	9	10
Maximum Loads (kg)	517	588	653	721	770
Maximum Loads (t)	20.7	23.6	26.1	28.8	30.8

Auxiliary boom loads

No. of Parts of Line	1	2
Maximum Loads (kg)	170	215
Maximum Loads (t)	11.0	13.25

Type Boom	Weight of hook block			
	10.0	20.0	30.0	40.0
Weight (kg)	1.7	0.8	1.7	0.45

Use all of the equipment in excess of rated loads or beyond 2 of installation with the manual.

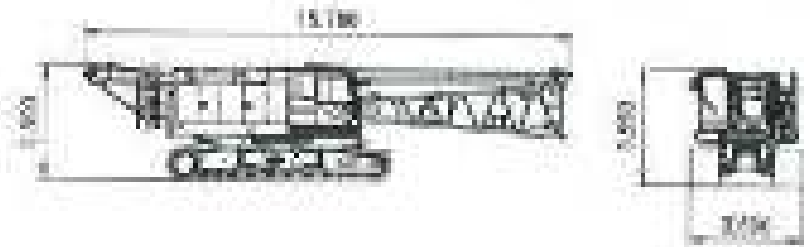
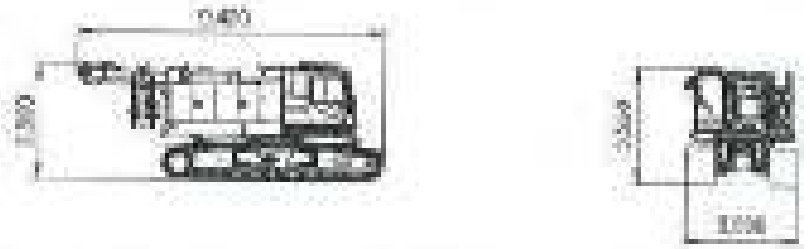
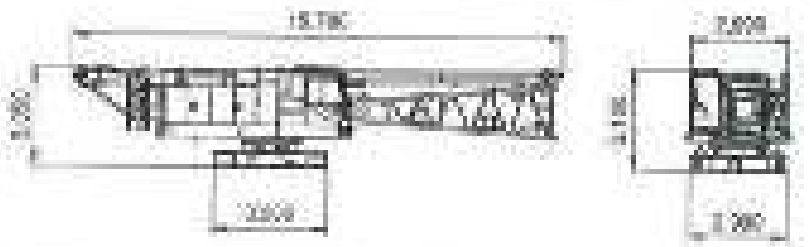
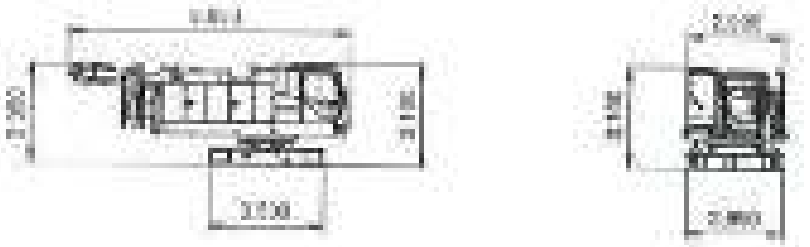

LIFTING CAPACITIES

Reduced Weights Rating Charts Crane Boom Lifting Capacities

Dimensions in ft. & in.
All loads in pounds unless
indicated otherwise.
L12500000

Crane Model	Boom Length	Lifting Capacity (lbs)										Boom Length
		52.4	56.8	61.2	64.4	67.6	70.8	74.0	77.2	80.4	83.6	
3.5	11.8x10.2											
4.0	12.3	11.8x10.2										4.3
4.5	12.7	12.2	11.8x10.2									4.8
5.0	13.2	12.7	12.2	11.8x10.2								5.3
5.5	13.7	13.2	12.7	12.2	11.8x10.2							5.8
6.0	14.2	13.7	13.2	12.7	12.2	11.8x10.2						6.3
6.5	14.7	14.2	13.7	13.2	12.7	12.2	11.8x10.2					6.8
7.0	15.2	14.7	14.2	13.7	13.2	12.7	12.2	11.8x10.2				7.3
7.5	15.7	15.2	14.7	14.2	13.7	13.2	12.7	12.2	11.8x10.2			7.8
8.0	16.2	15.7	15.2	14.7	14.2	13.7	13.2	12.7	12.2	11.8x10.2		8.3
8.5	16.7	16.2	15.7	15.2	14.7	14.2	13.7	13.2	12.7	12.2	11.8x10.2	8.8
9.0	17.2	16.7	16.2	15.7	15.2	14.7	14.2	13.7	13.2	12.7	12.2	9.3
9.5	17.7	17.2	16.7	16.2	15.7	15.2	14.7	14.2	13.7	13.2	12.7	9.8
10.0	18.2	17.7	17.2	16.7	16.2	15.7	15.2	14.7	14.2	13.7	13.2	10.3
10.5	18.7	18.2	17.7	17.2	16.7	16.2	15.7	15.2	14.7	14.2	13.7	10.8
11.0	19.2	18.7	18.2	17.7	17.2	16.7	16.2	15.7	15.2	14.7	14.2	11.3
11.5	19.7	19.2	18.7	18.2	17.7	17.2	16.7	16.2	15.7	15.2	14.7	11.8
12.0	20.2	19.7	19.2	18.7	18.2	17.7	17.2	16.7	16.2	15.7	15.2	12.3
12.5	20.7	20.2	19.7	19.2	18.7	18.2	17.7	17.2	16.7	16.2	15.7	12.8
13.0	21.2	20.7	20.2	19.7	19.2	18.7	18.2	17.7	17.2	16.7	16.2	13.3
13.5	21.7	21.2	20.7	20.2	19.7	19.2	18.7	18.2	17.7	17.2	16.7	13.8
14.0	22.2	21.7	21.2	20.7	20.2	19.7	19.2	18.7	18.2	17.7	17.2	14.3
14.5	22.7	22.2	21.7	21.2	20.7	20.2	19.7	19.2	18.7	18.2	17.7	14.8
15.0	23.2	22.7	22.2	21.7	21.2	20.7	20.2	19.7	19.2	18.7	18.2	15.3
15.5	23.7	23.2	22.7	22.2	21.7	21.2	20.7	20.2	19.7	19.2	18.7	15.8
16.0	24.2	23.7	23.2	22.7	22.2	21.7	21.2	20.7	20.2	19.7	19.2	16.3
16.5	24.7	24.2	23.7	23.2	22.7	22.2	21.7	21.2	20.7	20.2	19.7	16.8
17.0	25.2	24.7	24.2	23.7	23.2	22.7	22.2	21.7	21.2	20.7	20.2	17.3
17.5	25.7	25.2	24.7	24.2	23.7	23.2	22.7	22.2	21.7	21.2	20.7	17.8
18.0	26.2	25.7	25.2	24.7	24.2	23.7	23.2	22.7	22.2	21.7	21.2	18.3
18.5	26.7	26.2	25.7	25.2	24.7	24.2	23.7	23.2	22.7	22.2	21.7	18.8
19.0	27.2	26.7	26.2	25.7	25.2	24.7	24.2	23.7	23.2	22.7	22.2	19.3
19.5	27.7	27.2	26.7	26.2	25.7	25.2	24.7	24.2	23.7	23.2	22.7	19.8
20.0	28.2	27.7	27.2	26.7	26.2	25.7	25.2	24.7	24.2	23.7	23.2	20.3
20.5	28.7	28.2	27.7	27.2	26.7	26.2	25.7	25.2	24.7	24.2	23.7	20.8
21.0	29.2	28.7	28.2	27.7	27.2	26.7	26.2	25.7	25.2	24.7	24.2	21.3
21.5	29.7	29.2	28.7	28.2	27.7	27.2	26.7	26.2	25.7	25.2	24.7	21.8
22.0	30.2	29.7	29.2	28.7	28.2	27.7	27.2	26.7	26.2	25.7	25.2	22.3
22.5	30.7	30.2	29.7	29.2	28.7	28.2	27.7	27.2	26.7	26.2	25.7	22.8
23.0	31.2	30.7	30.2	29.7	29.2	28.7	28.2	27.7	27.2	26.7	26.2	23.3
23.5	31.7	31.2	30.7	30.2	29.7	29.2	28.7	28.2	27.7	27.2	26.7	23.8
24.0	32.2	31.7	31.2	30.7	30.2	29.7	29.2	28.7	28.2	27.7	27.2	24.3
24.5	32.7	32.2	31.7	31.2	30.7	30.2	29.7	29.2	28.7	28.2	27.7	24.8
25.0	33.2	32.7	32.2	31.7	31.2	30.7	30.2	29.7	29.2	28.7	28.2	25.3
25.5	33.7	33.2	32.7	32.2	31.7	31.2	30.7	30.2	29.7	29.2	28.7	25.8
26.0	34.2	33.7	33.2	32.7	32.2	31.7	31.2	30.7	30.2	29.7	29.2	26.3
26.5	34.7	34.2	33.7	33.2	32.7	32.2	31.7	31.2	30.7	30.2	29.7	26.8
27.0	35.2	34.7	34.2	33.7	33.2	32.7	32.2	31.7	31.2	30.7	30.2	27.3
27.5	35.7	35.2	34.7	34.2	33.7	33.2	32.7	32.2	31.7	31.2	30.7	27.8
28.0	36.2	35.7	35.2	34.7	34.2	33.7	33.2	32.7	32.2	31.7	31.2	28.3
28.5	36.7	36.2	35.7	35.2	34.7	34.2	33.7	33.2	32.7	32.2	31.7	28.8
29.0	37.2	36.7	36.2	35.7	35.2	34.7	34.2	33.7	33.2	32.7	32.2	29.3
29.5	37.7	37.2	36.7	36.2	35.7	35.2	34.7	34.2	33.7	33.2	32.7	29.8
30.0	38.2	37.7	37.2	36.7	36.2	35.7	35.2	34.7	34.2	33.7	33.2	30.3
30.5	38.7	38.2	37.7	37.2	36.7	36.2	35.7	35.2	34.7	34.2	33.7	30.8
31.0	39.2	38.7	38.2	37.7	37.2	36.7	36.2	35.7	35.2	34.7	34.2	31.3
31.5	39.7	39.2	38.7	38.2	37.7	37.2	36.7	36.2	35.7	35.2	34.7	31.8
32.0	40.2	39.7	39.2	38.7	38.2	37.7	37.2	36.7	36.2	35.7	35.2	32.3
32.5	40.7	40.2	39.7	39.2	38.7	38.2	37.7	37.2	36.7	36.2	35.7	32.8
33.0	41.2	40.7	40.2	39.7	39.2	38.7	38.2	37.7	37.2	36.7	36.2	33.3
33.5	41.7	41.2	40.7	40.2	39.7	39.2	38.7	38.2	37.7	37.2	36.7	33.8
34.0	42.2	41.7	41.2	40.7	40.2	39.7	39.2	38.7	38.2	37.7	37.2	34.3
34.5	42.7	42.2	41.7	41.2	40.7	40.2	39.7	39.2	38.7	38.2	37.7	34.8
35.0	43.2	42.7	42.2	41.7	41.2	40.7	40.2	39.7	39.2	38.7	38.2	35.3
35.5	43.7	43.2	42.7	42.2	41.7	41.2	40.7	40.2	39.7	39.2	38.7	35.8
36.0	44.2	43.7	43.2	42.7	42.2	41.7	41.2	40.7	40.2	39.7	39.2	36.3
36.5	44.7	44.2	43.7	43.2	42.7	42.2	41.7	41.2	40.7	40.2	39.7	36.8
37.0	45.2	44.7	44.2	43.7	43.2	42.7	42.2	41.7	41.2	40.7	40.2	37.3
37.5	45.7	45.2	44.7	44.2	43.7	43.2	42.7	42.2	41.7	41.2	40.7	37.8
38.0	46.2	45.7	45.2	44.7	44.2	43.7	43.2	42.7	42.2	41.7	41.2	38.3
38.5	46.7	46.2	45.7	45.2	44.7	44.2	43.7	43.2	42.7	42.2	41.7	38.8
39.0	47.2	46.7	46.2	45.7	45.2	44.7	44.2	43.7	43.2	42.7	42.2	39.3
39.5	47.7	47.2	46.7	46.2	45.7	45.2	44.7	44.2	43.7	43.2	42.7	39.8
40.0	48.2	47.7	47.2	46.7	46.2	45.7	45.2	44.7	44.2	43.7	43.2	40.3
40.5	48.7	48.2	47.7	47.2	46.7	46.2	45.7	45.2	44.7	44.2	43.7	40.8
41.0	49.2	48.7	48.2	47.7	47.2	46.7	46.2	45.7	45.2	44.7	44.2	41.3
41.5	49.7	49.2	48.7	48.2	47.7	47.2	46.7	46.2	45.7	45.2	44.7	41.8
42.0	50.2	49.7	49.2	48.7	48.2	47.7	47.2	46.7	46.2	45.7	45.2	42.3
42.5	50.7	50.2	49.7	49.2	48.7	48.2	47.7	47.2	46.7	46.2	45.7	42.8
43.0	51.2	50.7	50.2	49.7	49.2	48.7	48.2	47.7	47.2	46.7	46.2	43.3
43.5	51.7	51.2	50.7	50.2	49.7	49.2	48.7	48.2	47.7	47.2	46.7	43.8
44.0	52.2	51.7	51.2	50.7	50.2	49.7	49.2	48.7	48.2	47.7	47.2	44.3
44.5	52.7	52.2	51.7	51.2	50.7	50.2	49.7	49.2	48.7	48.2	47.7	44.8
45.0	53.2	52.7	52.2	51.7	51.2	50.7	50.2	49.7	49.2	48.7	48.2	45.3
45.5	53.7	53.2	52.7	52.2	51.7	51.2	50.7	50.2	49.7	49.2	48.7	45.8
46.0	54.2	53.7	53.2	52.7	52.2	51.7	51.2	50.7	50.2	49.7	49.2	46.3
46.5	54.7	54.2	53.7	53.2	52.7	52.2	51.7	51.2	50.7	50.2	49.7	46.8
47.0	55.2	54.7	54.2	53.7	53.2	52.7	52.2	51.7	51.2	50.7	50.2	47.3
47.5	55.7	55.2	54.7	54.2	53.7	53.2	52.7	52.2	51.7	51.2	50.7	47.8
48.0	56.2	55.7	55.2	54.7	54.2	53.7	53.2	52.7	52.2	51.7	51.2	48.3
48.5	56.7	56.2	55.7	55.2	54.7	54.2	53.7	53.2	52.7	52.2	51.7	48.8
49.0	57.2	56.7	56.2	55.7	55.2	54.7	54.2	53.7	53.2	52.7	52.2	49.3
49.5	57.7	57.2	56.7	56.2	55.7	55.2	54.7	54.2	53.7	53.2	52.7	49.8
50.0	58.2	57.7	57.2	56.7	56.2	55.7	55.2	54.7	54.2	53.7	53.2	50.3
50.5	58.7	58.2	57.7	57.2	56.7	56.2	55.7	55.2	54.7	54.2	53.7	50.8
51.0	59.2	58.7	58.2	57.7	57.2	56.7	56.2	55.7	55.2	54.7	54.2	51.3
51.5	59.7	59.2	58.7	58.2	57.7	57.2	56.7	56.2	55.7	55.2	54.7	51.8
52.0	60.2	59.7	59.2	58.7	58.2	57.7	57.2	56.7	56.2	55.7	55.2	52.3
52.5	60.7	60.2	59.7	59.2	58.7	58.2	57.7	57.2	56.7	56.2	55.7	52.8
53.0	61.2	60.7	60.2	59.7	59.2	58.7	58.2	57.7	57.2	56.7	56.2	53.3
53.5	61.7	61.2	60.7	60.2	59.7							

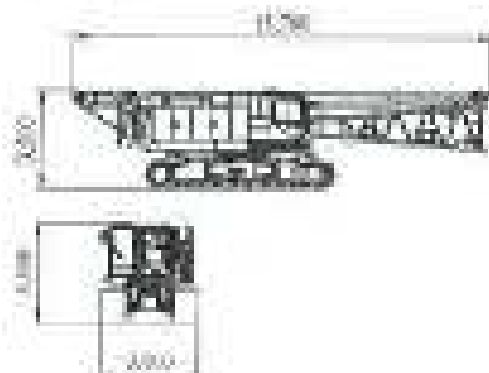
TRANSPORTATION PLAN

Name	Dimensions	Weight (kg)
Base Machine - Boom (down) - Gantry - Grapple - Wire rope (Front / rear / boom hold)		57,410
Base Machine - Gantry - Grapple - Wire rope (Front / rear / boom hold)		54,800
Base Machine - Boom (down) - Gantry - Wire rope (Front / rear / boom hold) - Without grapple		53,550
Base Machine - Gantry - Wire rope (Front / rear / boom hold) - Without grapple		36,000
Driveline		11,830

PARTS AND ATTACHMENTS

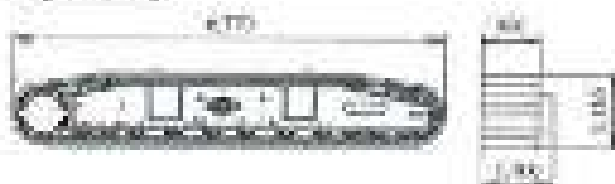
Base Module

Dist: 1241 (Qty: 1) Dist: 1242 (Qty: 1) Dist: 1243 (Qty: 1)
 Weight: 27,400 kg (with 2,000 m³)



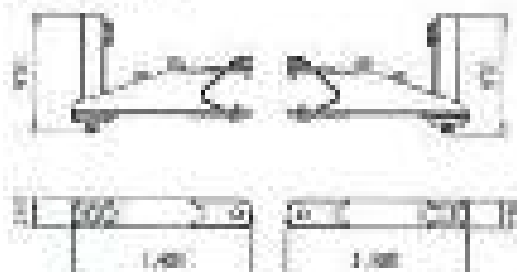
Encoder

Weight: 11,000 kg



Skid Shoe

Weight: 200 kg (1 piece)



Headset

Weight: 440 kg



AB Tr

Weight: 200 kg



AB Base

Weight: 100 kg



1.0 m AB Insert

Weight: 100 kg



0.5 m AB Insert

Weight: 200 kg



Shel

Weight: 150 kg



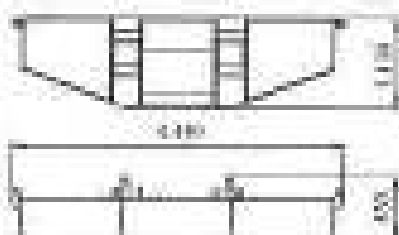
Auxiliary Tower

Weight: 200 kg



Encoder weight No.1

Weight: 11,000 kg



Encoder weight No.2, No.3 (H)

Weight: 6,700 kg



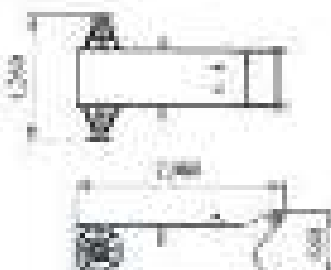
Encoder weight No.2, No.3 (L)

Weight: 1,700 kg



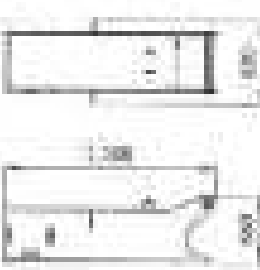
Encoder weight (with feet)

Weight: 2,370 kg (1 piece)



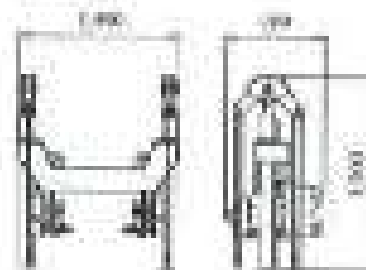
Encoder weight (without feet)

Weight: 2,000 kg (1 piece)



Ball Forward Unit

Weight: 870 kg



Frame 10
Weight: 1,420 kg



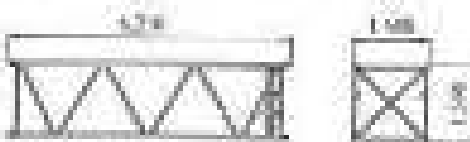
Frame Base
Weight: 2,000 kg



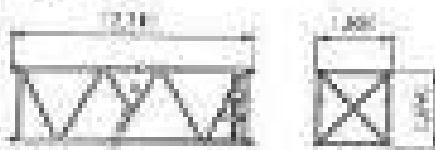
5.2 m Boom Mount
Weight: 200 kg



6.5 m Boom Mount
Weight: 300 kg



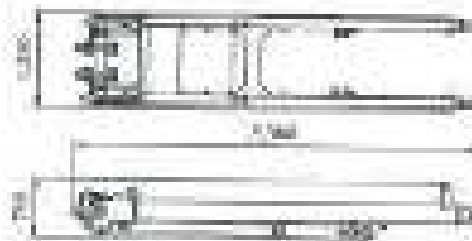
11.2 m Boom Mount
Weight: 1,100 kg



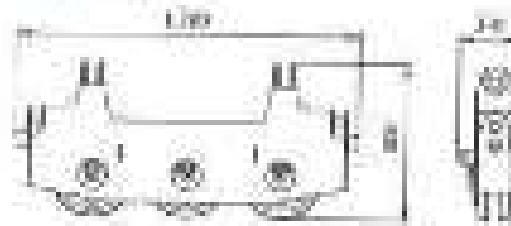
11.2 m Boom Mount with Leg
Weight: 1,200 kg



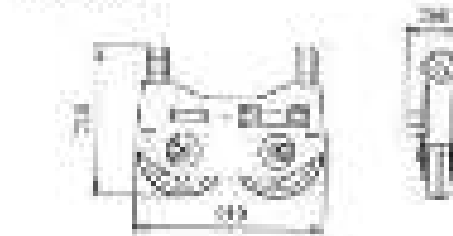
Bar 10
Weight: 1,200 kg



Upper Connector
Weight: 300 kg



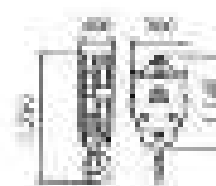
Lower Connector
Weight: 1,000 kg



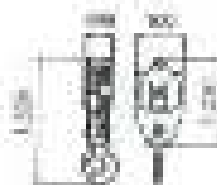
10T Hook
Weight: 450 kg



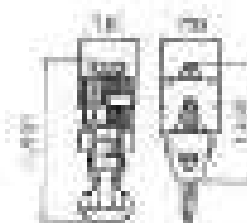
20T Hook
Weight: 700 kg



15T Hook
Weight: 500 kg



10H Hook
Weight: 1,000 kg





Model 110 is a lifting device with a rated capacity that complies with applicable standards and specifications and is certified for operation in some countries. Please consult your local authorities for further details and requirements. But to use a crane of another product group or model than the one specified, you might be obliged to change without extra charges.

Exceeding the rated capacity is prohibited. Do not use it for any purpose not intended by the manufacturer.



KOBELCO CRANES CO., LTD.

1-11, Ryugasaki 4-chome, Chiyoda-ku, Tokyo 100-8585, JAPAN
Tel: 81-3-3298-1101 Fax: 81-3-3298-1105
URL: <http://www.kobelco-cranes.com/>

Model 110